

Year 11 (2020/2021) CAGs 2021

Whole Cohort

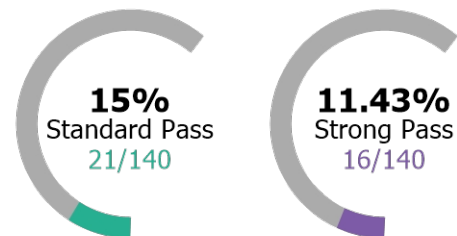
Pupils

140 Pupils 108 Boys 32 Girls

Baccalaureate

35

35 Pupils Entered - 25%



Baccalaureate Subjects

	Eng	Ma	Sci	Hums	Lang
Entries	137	137	133	107	47
	98%	98%	95%	76%	34%
Standard	104	89	77	73	41
	74%	64%	55%	52%	29%
Strong	82	63	52	54	39
	59%	45%	37%	39%	28%

Summary

3.95 -0.03 0.07 2.28

APS Sci VA Hums VA Lang VA

English

	Entries	9 to 7	9 to 5	9 to 4
	137	32	82	104
Pupils	97.86%	22.86%	58.57%	74.29%
Entries	-	23.36%	59.85%	75.91%

Maths

	Entries	9 to 7	9 to 5	9 to 4
	137	28	63	89
Pupils	97.86%	20.00%	45.00%	63.57%
Entries	-	20.44%	45.99%	64.96%

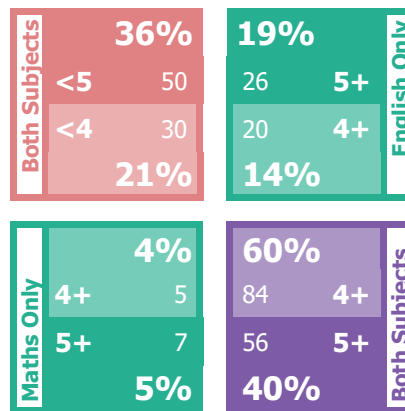
Science

	Entries	Pupils	Entries
1 Science	137	97.86%	-
Grade 4+	84	60.00%	61.31%
2 Sciences	137	97.86%	-
Grade 4+	78	55.71%	56.93%
3 Sciences	83	59.29%	-
Grade 4+	59	42.14%	71.08%
Bio/Chem/Phys	67	47.86%	-
Grade 4+	52	37.14%	77.61%

MFL

	Entries	Pupils	Entries
1 MFL Entry	47	33.57%	-
Grade 4+	41	29.29%	87.23%
2 MFL Entries	2	1.43%	-
Grade 4+	2	1.43%	100.00%

English & Maths Threshold

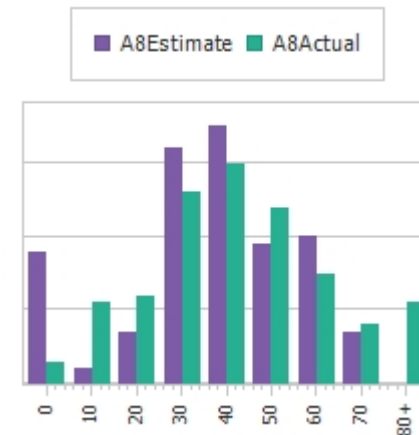


137 Pupils Entered - 97.86%

Entries

9 to 8 - inc A*'s	(12.29%)
	148
9 to 7 - inc A*-A	(22.01%)
	265
9 to 5 - inc A*-B	(50.17%)
	604
9 to 5 - inc A*-C	(51.91%)
	625
9 to 4 - inc A*-C	(69.52%)
	837
Total	1204.00
Average	8.60

Progress 8



	A8	P8
English	9.71	+0.02
Maths	8.84	+0.04
EBacc	13.94	+0.28
Other	14.08	+0.04
Overall	46.58	+0.11
Filled Slots	125	89.29%

Performance

	Pupils	Percent
5 A* to C	90	64.29%
Inc EnMa (4+):	79	56.43%
Inc EnMa (5+):	55	39.29%
5 Grade 5+	61	43.57%
Inc EnMa:	49	35.00%